

Upholstery

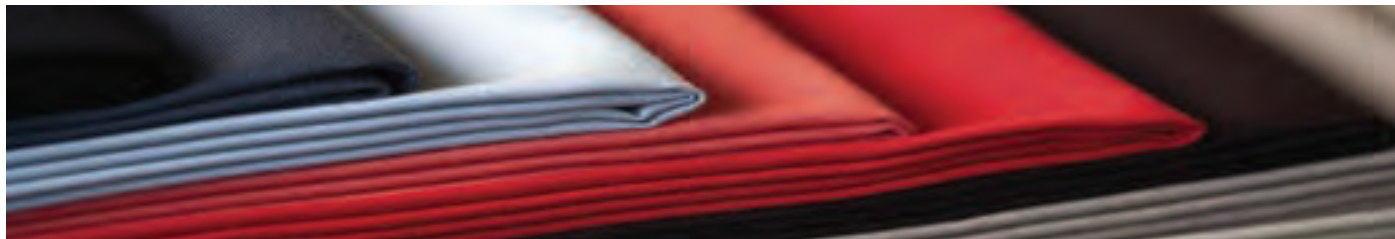
Agora Fabric



We present Agora, the new luxury fabric brand created for indoor and outdoor upholstery. Agora combines the know-how and will to innovate two expert fabric manufacturing companies: Sauleda and Tuvatexil.

Two pioneer companies which have combined the latest technological trends with delicate, harmonious designs in the new White & Colours collection.

A collection of luxury fabrics that allows you to add your personal touch. However, Agora can also be used to decorate the environment in a style as individual as you, with endless possibilities.



Agora Genesis Jacquard



GENESIS BLANCO 3763



GENESIS ALABASTRO 3762



GENESIS INTEGRAL 3766



GENESIS MAIZ 3767



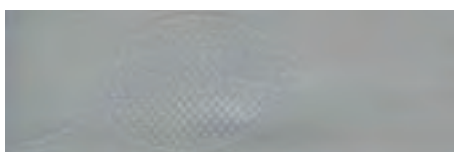
GENESIS VISON 3769



GENESIS CAFÉ 3765



GENESIS BRISA 3764



GENESIS PERLA 3768

TECHNICAL SPECIFICATIONS

WIDTH 160cm

WEIGHT 295gsm

FABRIC COMPOSITION 100% Solution Dyed Acrylic

FINISH Teflon with stain and mildew resistant treatment

WARRANTY 5 years

FABRIC REPEAT 41cm x 29cm

CLEANING INSTRUCTIONS



Cool Wash



Chlorine Allowed



Low Iron

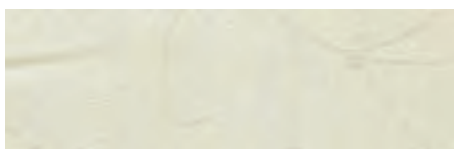


Do Not Tumble Dry



Do Not Dry Clean

Agora Vals Jacquard



VALS BLANCO 3763



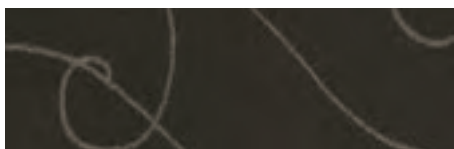
VALS ALABASTRO 3745



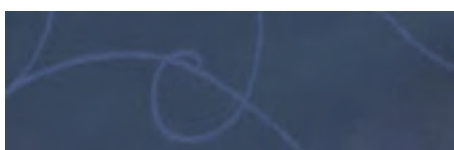
VALS INTEGRAL 3749



VALS MAIZ 3750



VALS CAFÉ 3765



VALS BRISA 3764

TECHNICAL SPECIFICATIONS

WIDTH 160cm

WEIGHT 295gsm

FABRIC COMPOSITION 100% Solution Dyed Acrylic

FINISH Teflon with stain and mildew resistant treatment

WARRANTY 5 years

FABRIC REPEAT 58cm x 90cm

CLEANING INSTRUCTIONS



Cool Wash



Chlorine Allowed



Low Iron



Do Not Tumble Dry



Do Not Dry Clean

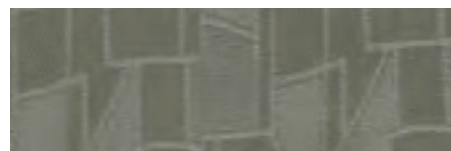
Agora Manhattan Jaquard



MANHATAN BLANCO 3754



MANHATAN ALABASTRO 3753



MANHATAN MINERAL 3758



MANHATAN MAIZ 3757



MANHATAN CAFÉ 3756



MANHATAN BRISA 3755

TECHNICAL SPECIFICATIONS

WIDTH 160cm

WEIGHT 295gsm

FABRIC COMPOSITION 100% Solution Dyed Acrylic

FINISH Teflon with stain and mildew resistant treatment

WARRANTY 5 years

FABRIC REPEAT 10cm x 16cm

CLEANING INSTRUCTIONS



Cool Wash



Chlorine Allowed



Low Iron



Do Not Tumble Dry



Do Not Dry Clean

Agora Pompadour Jaquard



POMPADOUR BLANCO 3761



POMPADOUR ALABASTRO 3760

TECHNICAL SPECIFICATIONS

WIDTH 160cm

WEIGHT 295gsm

FABRIC COMPOSITION 100% Solution Dyed Acrylic

FINISH Teflon with stain and mildew resistant treatment

WARRANTY 5 years

FABRIC REPEAT 14cm x 18cm

CLEANING INSTRUCTIONS



Cool Wash



Chlorine Allowed



Low Iron



Do Not Tumble Dry

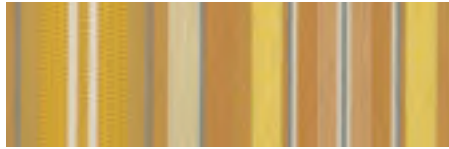


Do Not Dry Clean

Agora Rayure



RAYURE BEIGE 3787



RAYURE AMARILLO 3785



RAYURE MARRON 3789



RAYURE AZUL 3789



RAYURE GRIS 3788

TECHNICAL SPECIFICATIONS

WIDTH 160cm

WEIGHT 260gsm

FABRIC COMPOSITION 100% Solution Dyed Acrylic

FINISH Teflon with stain and mildew resistant treatment

WARRANTY 5 years

CLEANING INSTRUCTIONS



Cool Wash



Chlorine Allowed



Low Iron



Do Not Tumble Dry



Do Not Dry Clean

Agora Fantasy



FANTASY BLANCO 3781



FANTASY CREMA 3780



FANTASY BEIGE 3775



FANTASY GRIS 3779



FANTASY MARINO 3777



FANTASY CAFÉ 3776



FANTASY NEGRO 3778

TECHNICAL SPECIFICATIONS

WIDTH 140cm

WEIGHT 310gsm

FABRIC COMPOSITION 100% Solution Dyed Acrylic

FINISH Teflon with stain and mildew resistant treatment

WARRANTY 5 years

CLEANING INSTRUCTIONS



Cool Wash



Chlorine Allowed



Low Iron

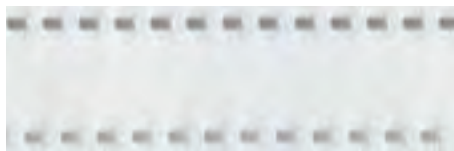


Do Not Tumble Dry



Do Not Dry Clean

Agora Exodo Jacquard



EXODO 001 - 3790



EXODO 002 - 3790



EXODO 017 - 3792



EXODO 062 - 3793

TECHNICAL SPECIFICATIONS

WIDTH 160cm

WEIGHT 295gsm

FABRIC COMPOSITION 100% Solution Dyed Acrylic

FINISH Teflon with stain and mildew resistant treatment

WARRANTY 5 years

CLEANING INSTRUCTIONS



Cool Wash



Chlorine Allowed



Low Iron

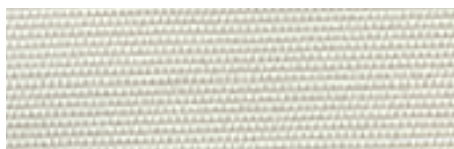


Do Not Tumble Dry



Do Not Dry Clean

Agora Panama



PANAMA BLANCO 3739



PANAMA MARFIL 3741



PANAMA INTEGRAL 3740



PANAMA BEIGE/CAFÉ 3738



PANAMA AZAFRAN 3737



PANAMA MINERAL 3741

TECHNICAL SPECIFICATIONS

WIDTH 160cm

WEIGHT 300gsm

FABRIC COMPOSITION 100% Solution Dyed Acrylic

FINISH Teflon with stain and mildew resistant treatment

WARRANTY 5 years

CLEANING INSTRUCTIONS



Cool Wash



Chlorine Allowed



Low Iron

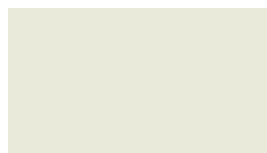


Do Not Tumble Dry

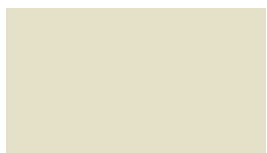


Do Not Dry Clean

Agora Lisos Plains



LISOS BLANCO 3701



LISOS NATURAL 3702



LISOS MARFIL 3704



LISOS AVENA 3707



LISOS ALABASTRO 3703



LISOS INTEGRAL 3705



LISOS TOFFEE 3706



LISOS MOSTAZA 3708



LISOS AZAFRAN 3709



LISOS TERRACOTA 3710



LISOS MARRON 3712



LISOS CAFÉ 3713



LISOS AMARILLO 3714



LISOS MANDARINA 3715



LISOS TOMATO 3716



LISOS ROJO 3717



LISOS BRASSERIE 3718



LISOS GRANATE 3711



LISOS PURPURA 3720



LISOS OLIVA 3724



LISOS VERDE CLARO 3726



LISOS VERDE 3727



LISOS BOTELLA 3725



LISOS TURKIS 3721



LISOS INDIGO 3733



LISOS AZUL 3722



LISOS BRISA 3736



LISOS MARINO 3723



LISOS SILVER 3128



LISOS PERLA 3735



LISOS MINERAL 3729



LISOS BASALTO 3730



LISOS ANTRACITA 3731



LISOS NEGRO 3732

TECHNICAL SPECIFICATIONS

WIDTH 160cm

WEIGHT 260gsm

FABRIC COMPOSITION 100% Solution Dyed Acrylic

FINISH Teflon with stain and mildew resistant treatment

WARRANTY 5 years

CLEANING INSTRUCTIONS



Cool Wash



Chlorine Allowed



Low Iron



Do Not Tumble Dry



Do Not Dry Clean

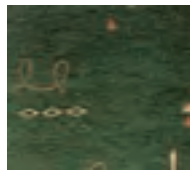
Nerango Fabric



Nerango is a blended Polyester/Acrylic upholstery fabric.

With its modern pattern design Nerango is an ideal choice for Boat, Caravan and Motorhome squabs.

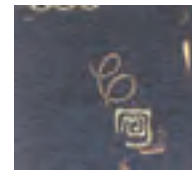
1500mm wide Pattern repeats every 400mm warp and weft.



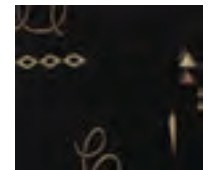
HOLLY



COGNAC



TWILIGHT



BLACK

Mystic Fabric



Mystic is a blended Acrylic/Polyester upholstery fabric.

With its modern pattern design Mystic is an ideal choice for Boat, Caravan and Motorhome squabs.

1500mm wide.

Pattern repeats every 315mm (warp direction) & 375mm (weft direction)



GREY



BLACK



NAVY

Conception Fabric



Conception fabric is specifically designed for Automotive and Upholstery Seating.

Made from 100% Polyester yarns it is very durable and robust and comes complete with a nonwoven polyester backing laminated to the fabric. This aids as a protective layer when spraying glue to the cloth for foam backing.

This is a continuous milled cloth and not a surplus buy up cloth so pattern range will be available at all times.

150cm wide

TECHNICAL SPECIFICATIONS

| | |
|-----------------------------------|---|
| WIDTH | 150cm |
| WEIGHT | 190gsm |
| FABRIC | 100% Polyester (including backing) |
| TENSILE STRENGTH Warp/Weft | 60kgf / 72kgf (ISO-TC-38 / SC8 / WG2) |
| TEAR STRENGTH Warp/Weft | 9kgf / 8kgf (UNE 40-404-79) |
| BREAK ELONGATION Warp/Weft | 62% / 50% (ISO-TC-38 / SC8 / WG2) |
| WASHING SHRINKAGE at 40deg | 1% warp / 1% weft (ISO-675-1979) |
| WASHING FASTNESS | Discharge 4/5, Colour change 4 (ISO-105-C01:1989) |
| RUB FASTNESS | Dry 4-5 Wet 4-5 (DIN ISO EN 105-X12) |
| COLOUR FASTNESS to LIGHT | 4-5 (DIN ISO EN 105-B02) |
| ABRASION RESISTANCE | 40,000 (Martindale BS-5690-991) |
| SEAM SLIPPAGE | 3mm (BS 2543-1995) |
| FABRICATION METHODS | Sewing |
| WASHING INSTRUCTIONS | Do not use Optical Bleaching, Hand or Machine Wash at 30degC, use Neutral Detergent, Avoid Sun Exposure |



486-4



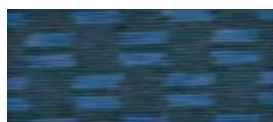
394-5



362-9



466-6



389-3



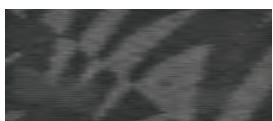
374-5



467-5



392-6



343-6



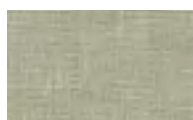
467-10

Enigma Fabric



TECHNICAL SPECIFICATIONS

| | |
|------------------------|---------------------------------|
| WIDTH | 145cm |
| COMPOSITION | 100% Polyester |
| BACKING | Black Felt |
| COLOUR FASTNESS | 4/5 Grade (BS) ISO 105 B02-2000 |
| ABRASION | 110,000 Wyzenbeek Double Rubs |



LINEN



TUSSOCK



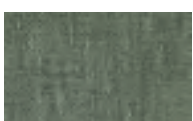
CAPPUCCHINO



BRACKEN



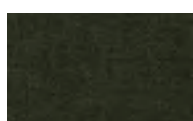
HAVANA



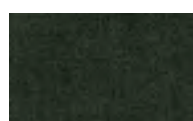
STONE



STORM



COFFEE



SCHIST



CHILLI

Metro Vinyl



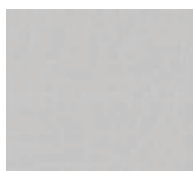
Metro is durable interior upholstery vinyl ideal for Automotive and General upholstery.

TECHNICAL SPECIFICATIONS

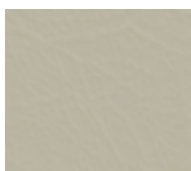
| | | | |
|---------------------------|----------------------------|---------------------------|----------------|
| WIDTH | 137cm | | |
| TOP SKIN | 0.12mm | | |
| THICKNESS | Approx. 0.8mm | | |
| SURFACE COATING | PVC / Foam Expanded | | |
| BASE CLOTH | T/R | | |
| U/V RESISTANCE | QUV 300hrs | | |
| TEAR WING STRENGTH | MD 2.0kg ↑/3cm | CD 2.0kg ↑/3cm | CNS.9520-K6730 |
| TENSILE STRENGTH | MD 11kg ↑/3cm | CD 8kg ↑/3cm | CNS.9520-K6730 |
| BURST STRENGTH | MD 8kgs ↑/cm ² | CD 8kgs ↑/cm ² | CNS.2054 3011 |
| ABRASION | 20,000+ cycles (Wyzenbeek) | | ASTMD4157 |
| FLEXING | 5,000 cycles (25°C Pass) | | CNS7705K-6679 |
| FABRIC CARE | OFPANZ Care Label OF-2 | | |



BLACK



LIGHT GREY



MID GREY



DARK GREY



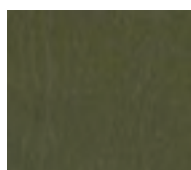
CASHTAN



TAN



BARK



OLIVE



SHERWOOD GREEN



DARK BLUE

Windsor Vinyl



Windsor vinyl is an excellent quality interior upholstery vinyl ideal for Automotive and General upholstery.

Windsor vinyl has been selling in the NZ market for over 30 years and is well known for its mottled finish in some colours.

TECHNICAL SPECIFICATIONS

| | | | |
|---------------------------|----------------------------|---------------------------|----------------|
| WIDTH | 137cm | | |
| TOP SKIN | 0.12mm | | |
| THICKNESS | Approx. 0.8mm | | |
| SURFACE COATING | PVC / Foam Expanded | | |
| BASE CLOTH | T/R | | |
| U/V RESISTANCE | QUV 300hrs | | |
| TEAR WING STRENGTH | MD 2.0kg ↑/3cm | CD 2.0kg ↑/3cm | CNS.9520-K6730 |
| TENSILE STRENGTH | MD 11kg ↑/3cm | CD 8kg ↑/3cm | CNS.9520-K6730 |
| BURST STRENGTH | MD 8kgs ↑/cm ² | CD 8kgs ↑/cm ² | CNS.2054 3011 |
| ABRASION | 20,000+ cycles (Wyzenbeek) | | ASTMD4157 |
| FLEXING | 5,000 cycles (25°C Pass) | | CNS7705K-6679 |
| FABRIC CARE | OFPANZ Care Label OF-2 | | |



BLACK



BLUE



BROWN



RED



HONEY

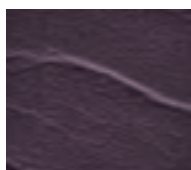
Sprint Vinyl



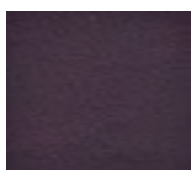
Sprint vinyl has been designed for the automotive and general upholstery market with a unique range of colours and emboss finishes.

TECHNICAL SPECIFICATIONS

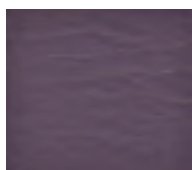
| | | | |
|---------------------------|----------------------------|------------------------------------|----------------|
| WIDTH | 137cm | | |
| TOP SKIN | 0.12mm | (N.B. SPRINT 1.2mm Black = 0.15mm) | |
| THICKNESS | Approx. 0.8mm | (N.B. SPRINT 1.2mm Black = 1.2mm) | |
| SURFACE COATING | PVC / Foam Expanded | | |
| BASE CLOTH | T/R | | |
| U/V RESISTANCE | QUV 300hrs | | |
| TEAR WING STRENGTH | MD 2.0kg ↑/3cm | CD 2.0kg ↑/3cm | CNS.9520-K6730 |
| TENSILE STRENGTH | MD 11kg ↑/3cm | CD 8kg ↑/3cm | CNS.9520-K6730 |
| BURST STRENGTH | MD 8kgs ↑/cm ² | CD 8kgs ↑/cm ² | CNS.2054 3011 |
| ABRASION | 20,000+ cycles (Wyzenbeek) | | ASTMD4157 |
| FLEXING | 5,000 cycles (25°C Pass) | | CNS7705K-6679 |
| FABRIC CARE | OFPANZ Care Label OF-2 | | |



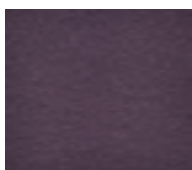
BLACK 1.2mm



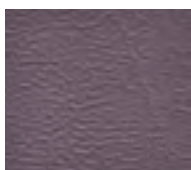
BLACK CALF



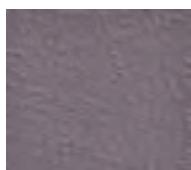
STORM



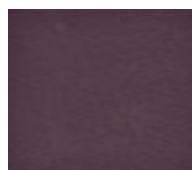
GRAPHITE



SLATE



ASH



CHOCOLATE

Ebony Kid Vinyl

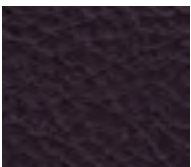


Ebony Kid is a brushed backed Automotive/ Upholstery grade vinyl with a true leather grain look.

The brushed backing provides a good supple feel to the vinyl.

TECHNICAL SPECIFICATIONS

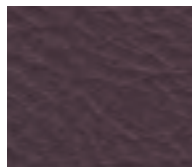
| | | | |
|---------------------------|---------------------------|---------------------------|----------------|
| WIDTH | 137cm | | |
| THICKNESS | Approx. 1.0mm | | |
| SURFACE COATING | PVC/Foam Expanded | | |
| BASE CLOTH | Brushed T/R Knitting | | |
| U/V RESISTANCE | QUV 500hrs | | |
| TEAR WING STRENGTH | MD 1.6kg↑/3cm | CD 1.6kg↑/3cm | CNS.9520-K6730 |
| TENSILE STRENGTH | MD 20kg↑/3cm | CD 10kg↑/3cm | CNS.9520-K6730 |
| BURST STRENGTH | MD 10kgs↑/cm ² | CD 10kgs↑/cm ² | CNS.2054 3011 |
| FABRIC CARE | OFPANZ Care Label OF-2 | | |



BLACK



DARK GREY



COCOA

Florida Vinyl



Florida is an excellent Heavy Duty Marine/Auto and Upholstery vinyl.

Florida has been widely used in the Marine/Auto and Upholstery Market throughout New Zealand over the past 12 years by leading NEW boat manufacturers and Upholsterers.

Florida is Flame retardant to MVSS-302 standard, has an Antibrase Lacquer Protective Surface and excellent Antimould Resistance.

TECHNICAL SPECIFICATIONS

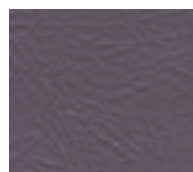
| | | | |
|---------------------------|--|----------------------------|----------------|
| WIDTH | 137cm | | |
| TOP SKIN | 0.15mm | | |
| THICKNESS | Approx. 0.9mm | | |
| SURFACE COATING | PVC / Foam Expanded / ABL Anti-Stain Lacquer Protection | | |
| BASE CLOTH | 100% Polyester Knit | | |
| ANTI-MOULD | Anti-Mould Inhibitors | | |
| U/V RESISTANCE | QUV 500hrs | | |
| TEAR WING STRENGTH | MD 3.5kg ↑/3cm | CD 3.5kg ↑/3cm | CNS.9520-K6730 |
| TENSILE STRENGTH | MD 24kg ↑/3cm | CD 12kg ↑/3cm | CNS.9520-K6730 |
| BURST STRENGTH | MD 10kgs ↑/cm ² | CD 10kgs ↑/cm ² | CNS.2054 3011 |
| ABRASION | 100,000+ cycles (Martindale) 50,000+ cycles (Wyzenbeek) | AS 2001.2.25 ASTMD4157 | |
| FLEXING | 5,000 cycles (25°C Pass CNS7705K-6679) CNS7705K-6679 | | |
| FIRE RETARDANT | 4in/min ↓ MVSS-302 / PASS | | |
| FABRIC CARE | OFPANZ Care Label OF-2 | | |



SHELL



SMOKE



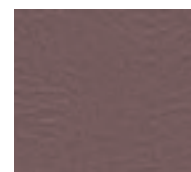
PEWTER



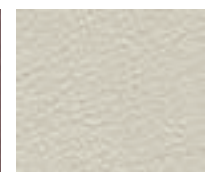
CHARCOAL



DOESKIN



TAUPE



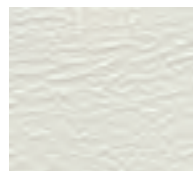
CHALK



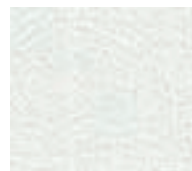
KELP



STONE



SAND



WHITE



CARNIVAL



TANGERINE



BURNT ORANGE



FLAME



PAPRIKA



RUBY



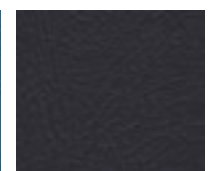
PURPLE



LIME



CARRIBEAN



FOREST



PERIWINKLE



WEDGEWOOD



CASTLE BLUE

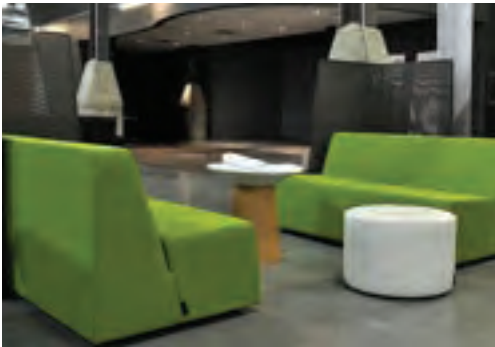


NAVY



BLACK

Enduro Vinyl



TECHNICAL SPECIFICATIONS

| | | | |
|---------------------------|---|----------------------------|----------------|
| WIDTH | 137cm | | |
| TOP SKIN | 0.20mm | | |
| THICKNESS | Approx. 1.08mm | | |
| SURFACE COATING | PVC / Foam Expanded / "Stain-Resist" Lacquer Protection | | |
| BASE CLOTH | 100% Polyester Knit | | |
| ANTI-MOULD | Anti-Mould Inhibitors | ASTM G21 | |
| ANTI-BACTERIAL | ATCC 147 | | |
| U/V RESISTANCE | QUV 500hrs minimum | ASTM G23 | |
| TEAR WING STRENGTH | MD 5.1kg ↑/3cm | CD 3.6kg ↑/3cm | CNS.9520-K6730 |
| TENSILE STRENGTH | MD 32.6kg ↑/3cm | CD 15.2kg ↑/3cm | CNS.9520-K6730 |
| BURST STRENGTH | MD 14kgs ↑/cm ² | CD 12kgs ↑/cm ² | CNS.2054 3011 |
| ABRASION | 100,000+ cycles (Martindale) 50,000+ cycles (Wyzenbeek) | AS 2001.2.25 ASTM D4157 | |
| FLEXING | 5,000 cycles (25°C Pass CNS7705K-6679) CNS7705K-6679 | | |
| FIRE RETARDANT | 4in/min ↓ MVSS-302 / PASS (Motor Vehicle) BS 5852-1 (Furniture) | | |
| FABRIC CARE | OFPANZ Care Label OF-2 | | |

Enduro is a commercial grade upholstery vinyl with a leather look embossed grain designed to meet the harsh conditions found in commercial applications.

Enduro features Superior Stain Resistance, High U/V Stability, Anti-Mould, Flame Retardancy and an Anti-Bacterial Treatment making it suitable for many

high demand commercial seating areas like Restaurants, Bars, Airports, Hospitals, Libraries, Universities and Schools and not forgetting Automotive and Marine applications.

Enduro has been surface treated with "STAIN-RESIST" a specialised formula to allow for easy cleaning and stain removal.

Care and maintenance: Regular cleaning of head-rests, arms and seat cushions is recommended to remove body oils which can cause hardening of the surface. Using a warm mild soapy sponge or cloth will remove most stains but for more stubborn stains like Grease, Pen, Markers, Crayons etc the use of Isopropyl Alcohol is recommended for spot cleaning.



Pacifica Vinyl



TECHNICAL SPECIFICATIONS

| | |
|------------------------|--|
| WIDTH | 137cm |
| THICKNESS | Approx. 1.0mm |
| SURFACE COATING | PVC / Foam Expanded / RESISTAIN® Finish / Bacteriostat Treated |
| BASE CLOTH | T/R |
| WARRANTY | 3 Year for Indoor and Outdoor application |
| RUB TEST | 50,000+ (Martindale Heavy Domestic/Heavy Commercial) AS2001.2.25-1990 |
| FLAME RETARDANT | AS1530.3 / AS3744.1 / A.652-16 |
| FABRIC CARE | OPPANZ Care Label OF-2 |



Pacifica is a superior upholstery vinyl used in the Auto/Marine and Furniture trade for more than 15 years. Treated with RESISTAIN an advanced surface finish, Pacifica is designed to perform to the harsh exterior environment.

Available in Three surface patterns, Plain, Hide Leather and Wicker Styles gives unlimited creative scope to designers. Pacifica also offers Mould and Mildew protection and Flame retardancy.

HIDE COLOUR CHART



STANDARD COLOUR CHART

| | | | | | | |
|--|---|---|---|--|---|---|
|  |  |  |  |  |  |  |
| WHITE CAP | VANILLA CREAM | OCEAN BEACH | PEARL | GOLD SHIMMER | COPRA | SEABED |
|  |  |  |  |  |  |  |
| CARAMEL | ANTELOPE | RUSSET | BRAZIL NUT | LEMON CHIFFON | CANARY | SUNGLOW |
|  |  |  |  |  |  |  |
| CUMQUAT | FIJIAN SUNSET | FIRE ENGINE | VOLCANO | MARSALA | PIXIE DUST | BUBBLE GUM |
|  |  |  |  |  |  |  |
| ORIENTAL LILY | PURPLE PASSION | PURPLE FROST | SILVER SPOON | SEA SPRAY | SEAL ROCK | SPRING BUD |
|  |  |  |  |  |  |  |
| COOL ALOE | TROPIC LIME | JUNGLE VINE | KALE | CATERPILLAR | ROBYN EGG | PEACOCK |
|  |  |  |  |  |  |  |
| ASTRAL | BLUE LAGOON | ICE BLUE | BLUE SAIL | MARINA | GALAXY | NIGHT SKY |

WEAVE COLOUR CHART

| | | | | | | |
|--|---|---|---|--|---|---|
|  |  |  |  |  |  |  |
| WHITE CAP | OCEAN BEACH | CORAL SAND | WHARF | NEPTUNE | GALAXY | SEA SPRAY |
|  |  |  |  |  | | |
| SEAL ROCK | NIGHT SKY | PEARL | SEA PEBBLE | SILVER FISH | | |

Designa Vinyl



TECHNICAL SPECIFICATIONS

| | | | |
|---------------------------|--|----------------|----------------|
| WIDTH | 137cm | | |
| TOP SKIN | 0.20mm | | |
| THICKNESS | Approx. 1.03mm | | |
| SURFACE COATING | PVC / Foam Expanded / "Stain-Resist" Lacquer Protection | | |
| BASE CLOTH | Q1 100% Polyester Knit | | |
| ANTI-MOULD | Anti-Mould Inhibitors | ASTM G21 | |
| ANTI-BACTERIAL | ATCC 147 | | |
| U/V RESISTANCE | QUV 500hrs | ASTM G23 | |
| TEAR WING STRENGTH | MD 3.3kg ↑/3cm | CD 3.5kg ↑/3cm | CNS.9520-K6730 |
| TENSILE STRENGTH | MD 18.1kg ↑/3cm | CD 10kg ↑/3cm | CNS.9520-K6730 |
| BURST STRENGTH | MD 15kgs ↑/cm ² | CNS.2054 3011 | |
| ABRASION | 100,000+ cycles (Martindale) | AS 2001.2.25 | |
| FLEXING | 5,000 cycles (25°C Pass) | CNS7705K-6679 | |
| FIRE RETARDANT | 4in/min ↓ MVSS-302 / PASS (Motor Vehicle) BS 5852-1 (Furniture) | | |
| FABRIC CARE | OPANZ Care Label OF-2 | | |

Designa Vinyl is a commercial grade upholstery vinyl with a textured coloured embossed grain designed to meet the harsh conditions found in commercial applications whilst looking aesthetically appealing.

Designa Vinyl features Superior Stain Resistance, High U/V Stability, Anti-Mould, Flame Retardancy and an Anti-Bacterial Treatment making it suitable for many high demand commercial seating areas like Restaurants, Bars, Airports, Hospitals, Libraries, Universities and Schools and not forgetting Automotive and Marine applications.

Designa Vinyl has been surface treated with "STAIN-RESIST" a specialised formula to allow for easy cleaning and stain removal.



LINEN



DUNE



TAWNY



QUAIL



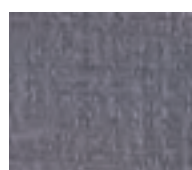
HICKORY



SHALE



SHADOW



LAVENDER



SPRING MOSS



TANGELO



FIREBRICK

Textures Vinyl



Textures Vinyl range is a selected range of Automotive and Upholstery textured vinyls.

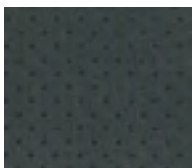
EM-281 TECHNICAL SPECIFICATIONS

| | | | |
|---------------------------|---|----------------|----------------|
| WIDTH | 137cm | | |
| TOP SKIN | 0.17mm | | |
| THICKNESS | Approx. 0.93mm | | |
| SURFACE COATING | PVC / Foam Expanded | | |
| BASE CLOTH | T/R 3036 100% Polyester Knit | | |
| U/V RESISTANCE | QUV 300hrs | ASTM G23 | |
| TEAR WING STRENGTH | MD 3.4kg ↑/3cm | CD 3.2kg ↑/3cm | CNS.9520-K6730 |
| TENSILE STRENGTH | MD 34.6kg ↑/3cm | CD 8.9g ↑/3cm | CNS.9520-K6730 |
| BURST STRENGTH | MD 14kgs ↑/cm ² | CNS.2054 3011 | |
| ABRASION | 20,000+ cycles (Wyzenbeek) | ASTMD4157 | |
| FLEXING | 5,000 cycles (25°C Pass) | CNS7705K-6679 | |
| FIRE RETARDANT | 4in/min ↓ MVSS-302 / PASS (Motor Vehicle) | | |
| FABRIC CARE | OFPANZ Care Label OF-2 | | |



EM-281

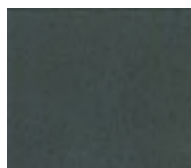
Refer to online specification sheets for further details on the Textures range



EM-127



EM-322A



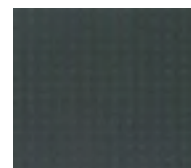
EM-043



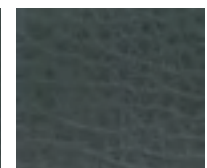
EM-155



EM-132



EM-126



EM-131

Tasman Urban Leather



TECHNICAL SPECIFICATIONS

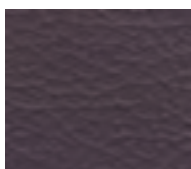
| | |
|------------------------------|--|
| DESCRIPTION | Drum dyed, corrected grain, finished leather |
| HIDE SIZE | 45-50sqft average |
| TEAR STRENGTH | >30 N (slot tear SLP 7/IUP 8) |
| FLEXING | 40,000 dry (flexometer SLP 14) |
| RESISTANCE TO RUBBING | Dry grade 3 min. 1000 rubs Wet grade 3 min. 300 rubs Sweat grade 3 min. 100 rubs |
| FLAME RETARDACY | BS 5852 Part1 (Pass schedule 4-cigarette) BS EN 1021-1 and 1021-2 (Pass schedule 5 match test) |
| CLEANING | Lightly wiping with a barely damp cloth at regular intervals. We recommend the use of PELE leather care products and suggested procedures for optimum leather care. |

A Corrected Grain pigmented leather with added softness through the addition of high quality fat liquors. This takes place alongside dyeing and is a key component in the softness of Urban.

Recent development in finishes enables Urban to have a kinder handle while retaining the high physicals that are demanded in this part of the market.



BLACK



SLATE



JURASSIC



NOCTURNE



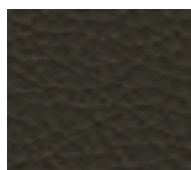
IVORY



PEBBLE



LATTE



HAVANA



MERLOT



PHOENIX

Calico Backed Foam



122cm Wide

6mm x 25m rolls

10mm x 25m rolls

Tricot Backed Foam



Tricot is a flexible backing applied to foam used to sew pleats into upholstery cloths, vinyls and leathers.

Tricot backed foam is 1600mm wide and is available in 3mm, 6mm, 10mm thickness.

Peeled Foam



1830mm wide x 30m rolls

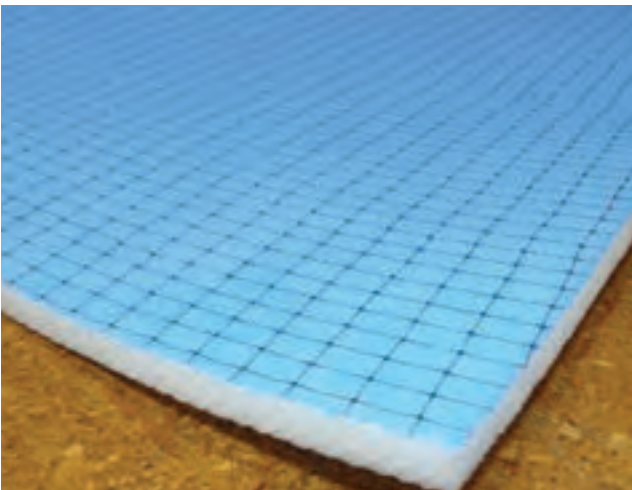
Available in 3mm & 6mm

Trimfoam Laminated Only



Trimfoam is a 1800mm wide x 10mm thickness laminated backed foam used as a backing foam to sew pleats into upholstery cloths, vinyls and leathers.

Trimfoam Laminated with Mesh Backing



Trimfoam is a 1800mm wide x 10mm thickness mesh backed foam used as a backing foam to sew pleats into upholstery cloths, vinyls and leathers.

Dunlop 28-130



A light-medium grade foam ideal for domestic and light commercial seating and seat backing.

Sheet size 2200mm x 1900mm

Available in 25, 38, 50, 75, 100mm Thicknesses.

Other thicknesses and special cut sizes available on request.

Dunlop 28-170



A medium grade foam ideal for domestic and light commercial seating and seat backing.

Sheet size 2200mm x 1900mm

Available in: 3, 6, 12, 25, 38, 50, 75, 100mm Thicknesses.

Other thicknesses and special cut sizes available on request.

Dunlop 37-140



A firm grade foam for domestic and light commercial seating.

Sheet size 2170mm x 2080mm

Available in 25,50,75,100mm Thicknesses.

Other thicknesses and special cut sizes available on request.

Dunlop 30-400



A firm lightweight grade foam ideal for shaping into motorbike seats and seat repairs.

Sheet size 2050mm x 1960mm

Available in 12, 25, 50mm Thicknesses.

Other thicknesses and special cut sizes available on request.

Dunlop Bonded B-85



A medium grade bonded chip foam.

Sheet size 1990mm x 1190mm

Available in 12, 25, 38, 50mm Thicknesses.

Other thicknesses and special cut sizes available on request.

Dunlop Bonded B-135

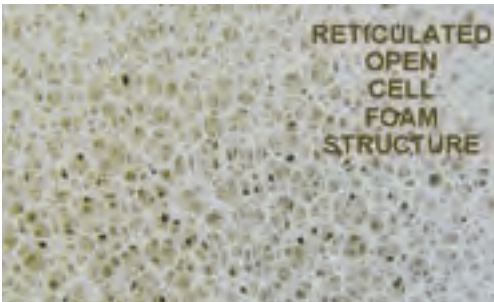


A Firm grade Bonded Chip Foam.

Available in: 25, 50mm Thicknesses.

Other thicknesses and special cut sizes available on request.

Ezy Dry Foam



| 2000mm X 1500mm FIRM GRADE | | | 2000mm X 1500mm EXTRA FIRM GRADE | | |
|----------------------------|-------------|-----------|----------------------------------|-------------|-----------|
| 25mm | | ✓ | 25mm | | ✓ |
| 50mm | | ✓ | 50mm | | ✓ |
| 75mm | | ✓ | 75mm | | ✓ |
| 100mm | | ✓ | 100mm | | ✓ |
| PPI (+/- 5) | DENSITY/cbm | ILD/lb | PPI (+/- 5) | DENSITY/cbm | ILD/lb |
| 28 | 29 | 45 | 28 | 29 | 60 |

Ezy Dry Foam is a reticulated open cell structure foam that will not absorb water, this makes it ideal for marine seating applications. As this foam will not hold water there is no risk of rot or mildew providing the cushion has adequate drainage on the underside.

EZY DRY FOAM is ideal for:

- Outdoor Furniture
 - Boats Squabs
 - Patio Squabs
 - Poolside Furniture
 - Daybeds
 - Outdoor Loungers
- And any other outdoor seating applications you may have.

Available in two grades:

Firm or Extra Firm

Sheet Size 2000mm x 1500mm

25mm, 50mm, 75mm, 100mm

Definitions:

PPI

Pores per Inch

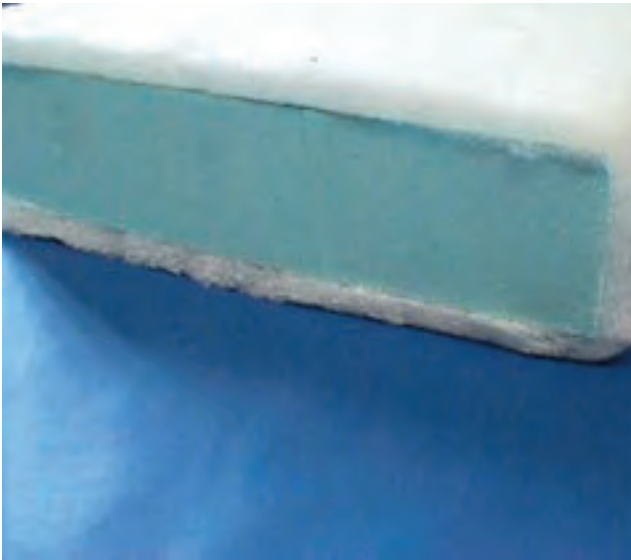
Density

Weight of foam per cubic meter

ILD

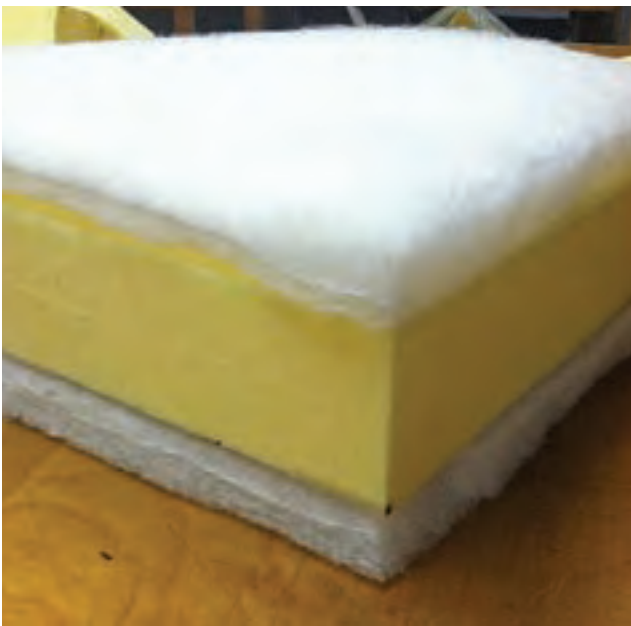
Indentation Load Deflection measures how many pounds of pressure required to indent 100mm of foam by 25%.

Melty Fibre



- 100gsm/3oz x 1500mm wide x 50m Rolls
- 135gsm/4oz x 1500mm wide x 30m Rolls
(Note this size is stocked in AUCKLAND only)
- 170gsm/5oz x 1500mm wide x 25m Rolls
- 270gsm/8oz x 1500mm wide x 20m Rolls

Supaloft T



- Supaloft-T Lofted Fibre
 - 100gsm x 1575mm wide x 35m Rolls
 - 175gsm x 1575mm wide x 25m Rolls
 - Supaloft-S Siliconised Fibre
 - 340gsm x 2030mm wide x 12m Rolls
- Please note these fibres are only available from the CHRISTCHURCH branch.

Calico



Available in Black or Unbleached.

50m rolls x 122cm wide

Gentex



Used as a dust cover for the underneath of furniture.

50gsm x 900mm wide x 250m rolls

Colour: Black

Hessian



18oz weight x 1830mm wide x 50m rolls

Silverline

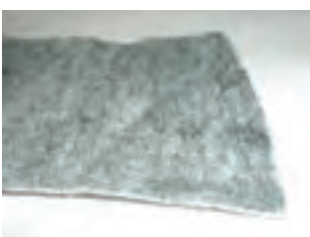


Silverline is a 4ply Polypropylene material for use as dust covers under furniture. It is also ideal for light weight storage covers.

(INTERNAL USE ONLY NOT TO BE USED OUTDOORS)

180gsm x 1575mm wide

Spring Protector



350gsm Needle punched Polypropylene.

1830mm wide x 25m rolls

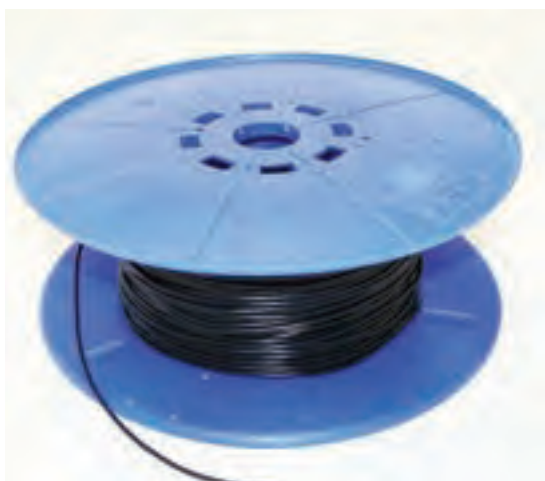
36thd Piping Cord



100% cotton piping cord used as an infill for making piping on furniture.

2kg rolls

Plastic Piping String 3mm



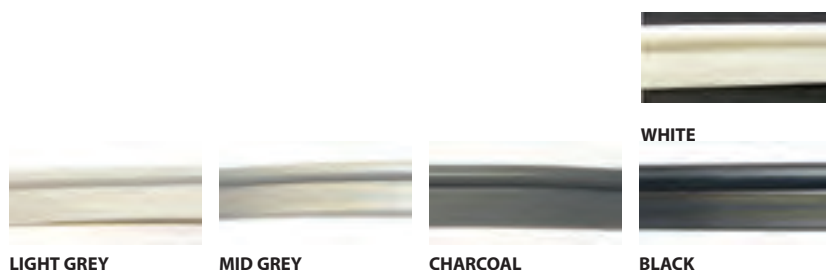
3mm thickness PVC string used as an infill for piping Leather and Vinyls.

200m rolls

Reid PVC Piping



A flanged PVC piping used to sew into Vinyl or Leather to create a piping edge.



Hog Ring Pliers



Hog ring pliers are used to close hog ring clips through the fabric onto wire framing.

Available in:

XL – Straight

XXL – Bent

Hog Rings 20.5mm



Mundial Scissors



Available in:

8", 10", 12"

Tailors Chalk



Available in Boxes of White Only or Coloured Assortment

50 pieces per box

Touchtape

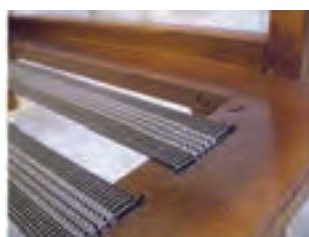


Hook and Loop Touch Tape

Standard
25mm Black/White/Beige
50mm Black/White/Beige
100mm Black

Pressure Sensitive P/S (Adhesive)
25mm Black/White
50mm Black/White

4 Stripe Seating Elastic



50mm wide x 100m rolls
Firm grade seating elastic.

Jute Webbing



50mm wide x 65m rolls

Coverfix



Available in 30m rolls

Zig Zag Springing



9 Gauge Zig Zag Springing

METRIC 20 Poly/Cotton Thread



M20 (Tex150)

- Spool length 2500m
- Average strength 15.84lbs (7.18kgs)

Available in: Black, White, Natural, Light Grey 3, Drab 519, Mid Brown 27, Beige 673, Dark Green 12

METRIC 25 Poly/Cotton Thread



M25 (Tex105)

- Spool length 2500m
- Average strength 12.14lbs (5.5kgs)

Available in: Black, White, Natural, Mid Grey 702, Grey 1327, Dark Grey 4, Drab 519, Drab 617, Dark Brown 23, Mid Brown 27, Beige 673, Green 11, Dark Green 12, Olive 1080, Blue 16, Navy 283, Dark Red 1698(3983), Red 2054(3885)

METRIC 36 Poly/Cotton Thread



M36 (Tex80)

- Spool length 2500m
- Average strength 7.93lbs (3.6kgs)

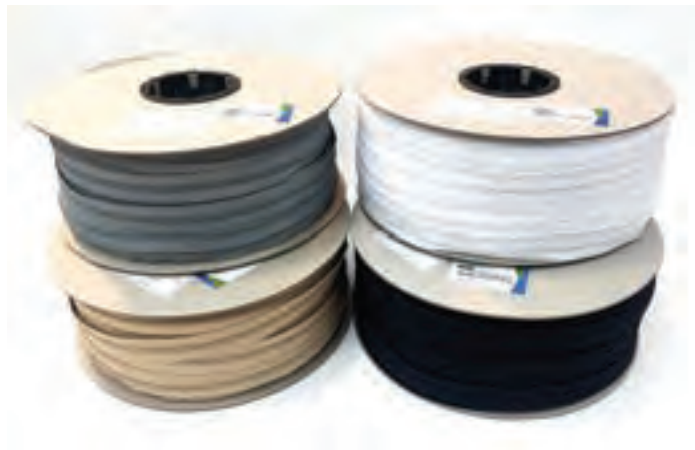
Available in: Black, White, Natural, Mid Grey 702, Drab 519, Beige 1919, Dark Brown 23, Mid Brown 27, Beige 673

METRIC 120 Overlocking Thread



Polyester Overlocking thread
M120 (Tex27)
Spool Length 5000m
Available in: Black, White

WW Brand 3 Coil Zipping



WW Brand 3 Coil Continuous
200m Rolls
Colours: Black/Beige/White/Grey

WW Brand 3 Coil Sliders
S/T Metal
Colours: Black/Beige/White/Grey